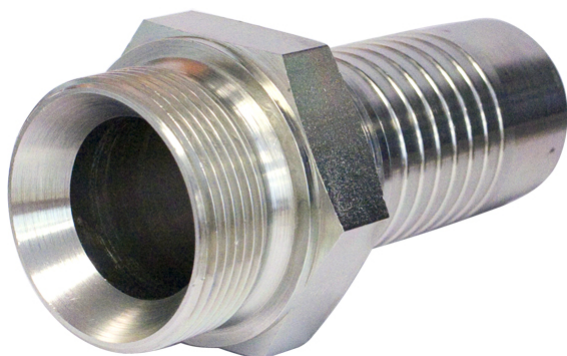


G-threaded straight



Product group	300
Material	Steel
Series	42-series
Fitting type	BSP
O-ring	No
Shape	Straight

Part no	Hex (mm)	Hose ID (inch)	Thread type	Thread	Weight (kg)
42020203	14	3/16"	G	G 1/8" Male	0.02
42020204	14	1/4"	G	G 1/8" Male	0.02
42020403	19	3/16"	G	G 1/4" Male	0.03
42020404	19	1/4"	G	G 1/4" Male	0.03
42020405	19	5/16"	G	G 1/4" Male	0.03
42020406	19	3/8"	G	G 1/4" Male	0.04
42020604	22	1/4"	G	G 3/8" Male	0.05
42020605	22	5/16"	G	G 3/8" Male	0.05
42020606	22	3/8"	G	G 3/8" Male	0.05
42020608	22	1/2"	G	G 3/8" Male	0.06
42020804	27	1/4"	G	G 1/2" Male	0.08
42020805	27	5/16"	G	G 1/2" Male	0.08
42020806	27	3/8"	G	G 1/2" Male	0.08
42020808	27	1/2"	G	G 1/2" Male	0.09
42020810	27	5/8"	G	G 1/2" Male	0.1
42020812	27	3/4"	G	G 1/2" Male	0.12
42021008	30	1/2"	G	G 5/8" Male	0.16
42021010	30	5/8"	G	G 5/8" Male	0.12
42021208	32	1/2"	G	G 3/4" Male	0.14
42021210	32	5/8"	G	G 3/4" Male	0.14
42021212	32	3/4"	G	G 3/4" Male	0.16
42021216	32	1"	G	G 3/4" Male	0.21
42021612	41	3/4"	G	G 1" Male	0.25
42021616	41	1"	G	G 1" Male	0.29
42022016	50	1"	G	G 1 1/4" Male	0.42



Part no	Hex (mm)	Hose ID (inch)	Thread type	Thread	Weight (kg)
42022020	50	1 1/4"	G	G 1 1/4" Male	0.47
42022420	55	1 1/4"	G	G 1 1/2" Male	0.56
42022424	55	1 1/2"	G	G 1 1/2" Male	0.6
42023224	70	1 1/2"	G	G 2" Male	0.86
42023232	70	2"	G	G 2" Male	0.98
42024040	-	2 1/2"	G	G 2 1/2" Male	1.55
42024848	-	3"	G	G 3" Male	-

