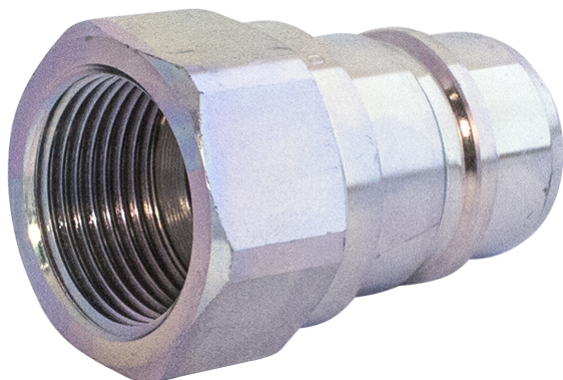


FASTER NV



Product group	380
Valve	Yes
Type (Male/Female)	Male
Eliminator	No
Connected length (mm)	166
Security lock	No
Bulkhead	No
Locking sleeve	No

Part no	Working pressure (MPa)	Thread	Dimension (inch)	Weight (kg)
55580204	35	G 1/4" Female	1/4"	0.04
55580206	30	G 3/8" Female	3/8"	0.07
55580208	30	G 1/2" Female	1/2"	0.08
55580212	25	G 3/4" Female	3/4"	0.12
55580216	23	G 1" Female	1"	0.28
55580220	22	G 1 1/4" Female	1 1/4"	0.52
55580224	18	G 1 1/2" Female	1 1/2"	0.9
55580232	13	G 2" Female	2"	2.28

