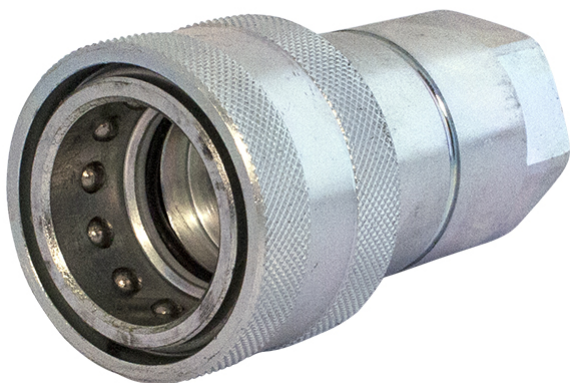


FASTER NV



Product group	520
Connected length (mm)	166
Locking sleeve	No
Security lock	No
Bulkhead	No
Eliminator	No
Valve	Yes
Type (Male/Female)	Female

Part no	Working pressure (MPa)	Thread	Dimension (inch)	Weight (kg)
55580304	35	G 1/4" Female	1/4"	0.1
55580306	30	G 3/8" Female	3/8"	0.19
55580308	30	G 1/2" Female	1/2"	0.25
55580312	25	G 3/4" Female	3/4"	0.5
55580316	23	G 1" Female	1"	0.82
55580320	22	G 1 1/4" Female	1 1/4"	1.45
55580324	18	G 1 1/2" Female	1 1/2"	2.38
55580332	13	G 2" Female	2"	4.78

