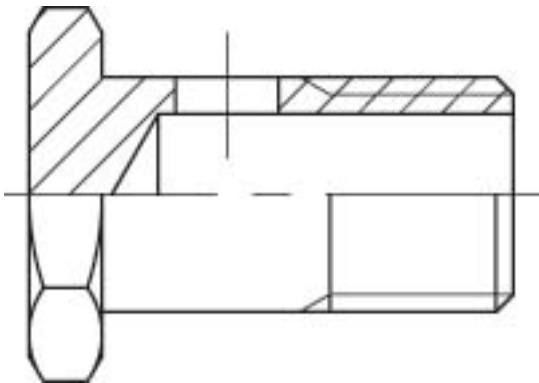


# Banjo bolt M, threaded



Product group  
Shape

510  
Straight

Part no	Material	Fitting type, industrial	Thread type	Thread	Bolt size	Weight (kg)
58860002	Steel	Low pressure fitting	G	G 1/8" Male	G 1/8"	0.02
58860004	Steel	Low pressure fitting	G	G 1/4" Male	G 1/4"	0.03
58860006	Steel	Low pressure fitting	G	G 3/8" Male	G 3/8"	0.04